



EnggDesign

ANALYSE DESIGN & DELIVER

**Experience
Engineering
Excellence**

About EnggDesign

Expertise: Leading design, analysis, engineering, manufacturing, and supply consultancy.

Established: 2017 at Pune, India by experienced engineers and technocrats.

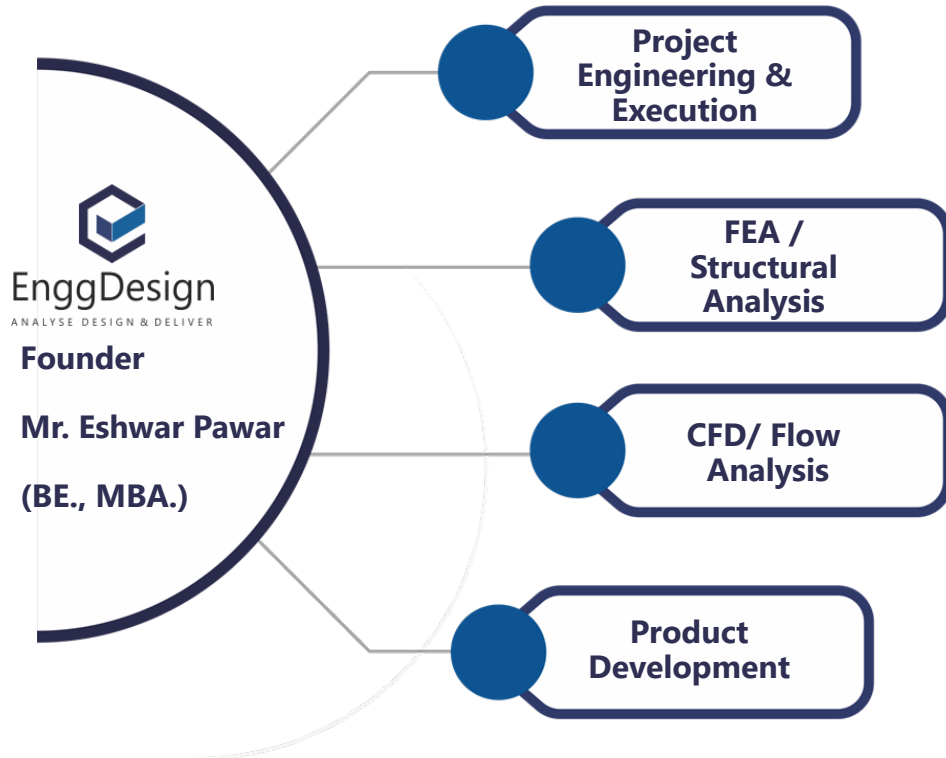
Serving **Diverse Sectors** by Adhering to various National-International **Standards & Codes**

Advanced Solutions: CFD and FEA for critical objects, equipment, and hydraulics.

Services :

- Engineering
- Manufacturing, Inspection
- Site Execution
- Expediting

Our Offerings



Our Offering

FEED & Detailed Engineering, Manufacturing, Supply

- Process Engineering
- Mechanical Engineering Design and Drawings
- Compliance to ASME BPE requirements
- Piping Engineering & 3D modeling
- Civil / Structure Engineering
- Instrumentation and Electrical Engineering
- Manufacturing and Supply
- Turnover Package Documentation for food & pharma Industries

Industries we serve

- Bio-Technology
- Food and Beverage
- Pharma Industries
- Oil & Gas
- Refinery
- Process Heaters
- Petrochemical
- Industrial Refrigeration
- Chemical Industries
- Distilleries
- WTP
- ETP
- Sugar Industries
- Manufacturing

Project Engineering and Execution

Design Codes / Standards

- ASME Sec. VIII Div. 1, Div.2
- ASME BPE
- API 650, 620, 653, 660, 661
- IBR, IS STD
- TEMA
- PD 5500
- ASME B 31.1, B 31.3, B 31.4, B 31.8
- GMP & GEP

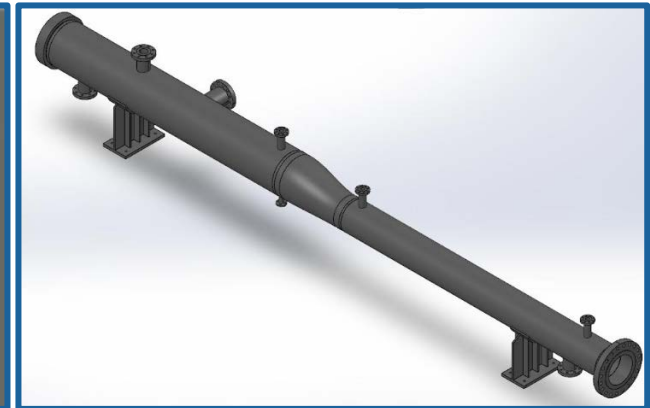
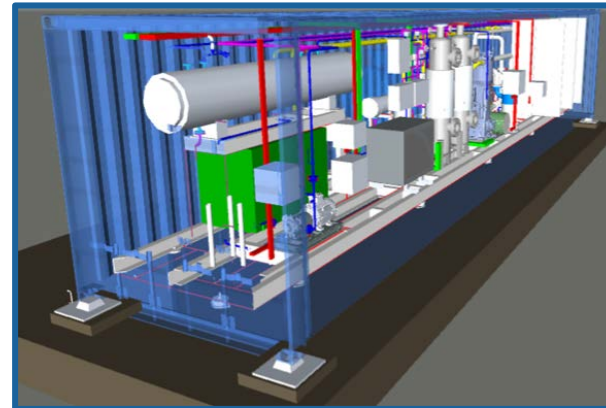
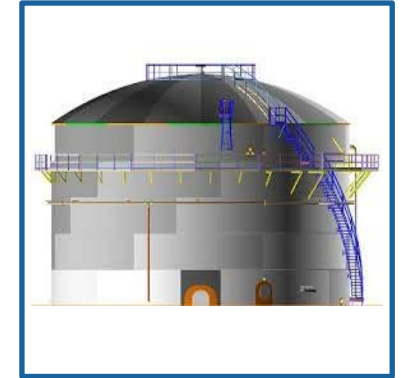
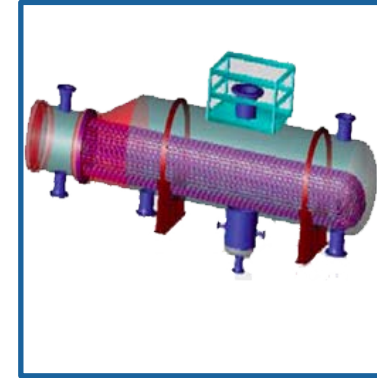
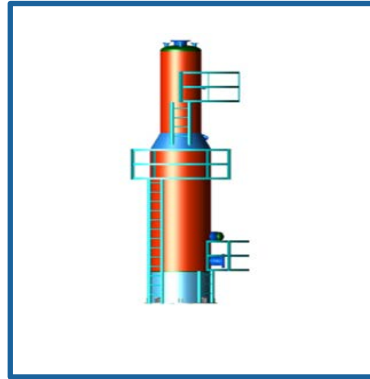


American
Petroleum
Institute



Equipment Engineering

- Pressure Vessels
- Column
- Heat Exchanger
- Storage Tanks
- Pig/Scraper Traps
- Stack
- Pharma Skids
- SIP / CIP Skids
- Dossier Packages
- Bio-Reactors
- Boiler & Accessories
- Furnace



Project Engineering and Execution

Milestones – Equipment Engineered

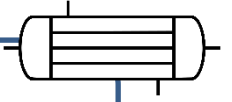
500+
Vessels



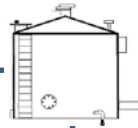
51+
Columns



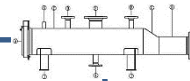
550+
Heat Exchangers



400+
Storage Tanks



130+
Scraper Traps



U-Stamp Equipment Engineering

Documentation:

- Mechanical Design Data-Sheet (MDS)
- Design Calculation as per ASME Sec VIII Div-1 and Div-2
- Design Drawings (General Assembly and Detailed Drawing)
- Analysis (Fatigue/Nozzle)
- Purchase Requisition (PR)
- Purchase Order Specification (POS)
- Third Party Approval on all applicable document
- Audit Point Clarification
- Dossier

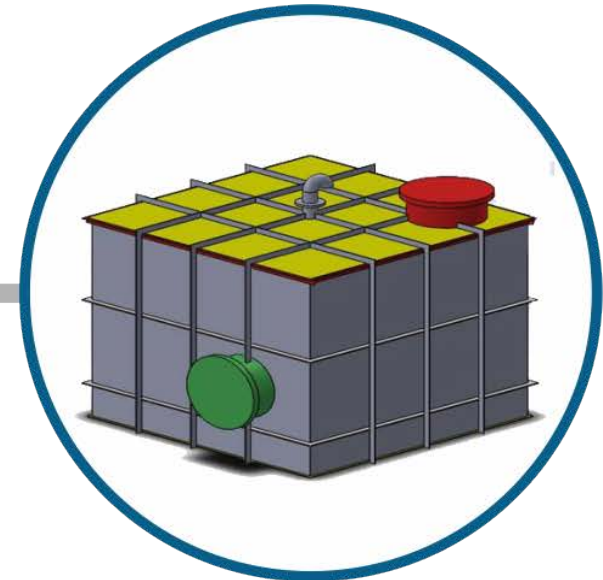
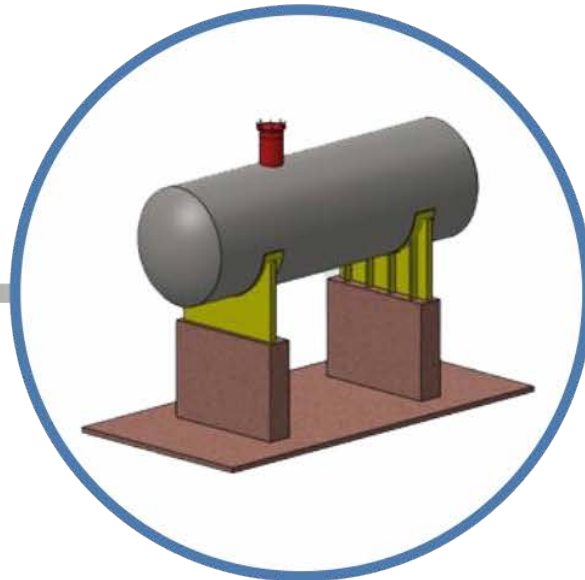


Projects: Domestic and International Project

Tank Farm Engineering and Site Execution

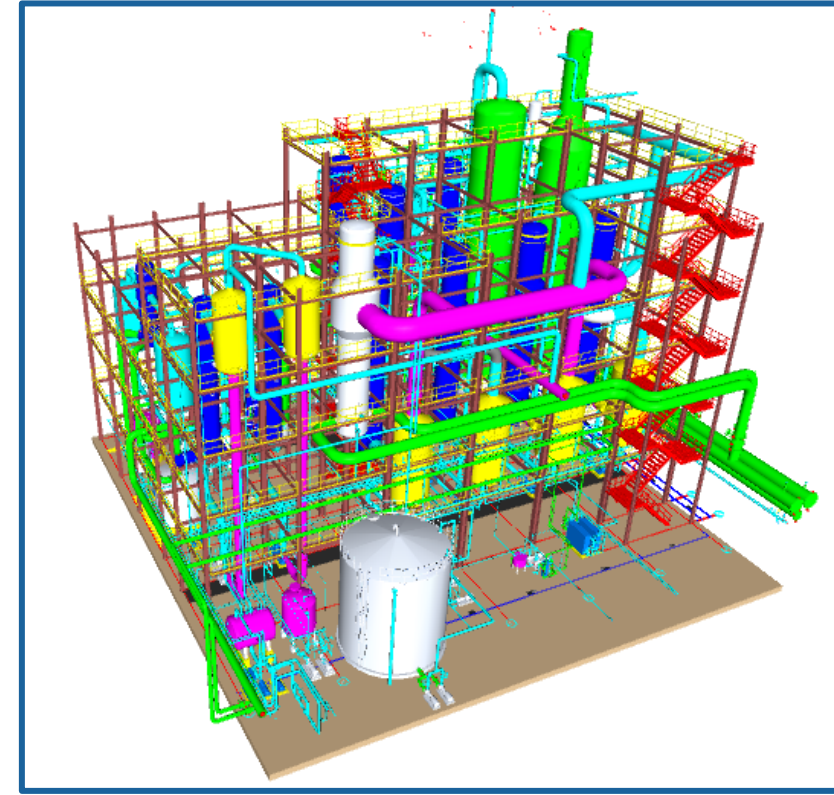
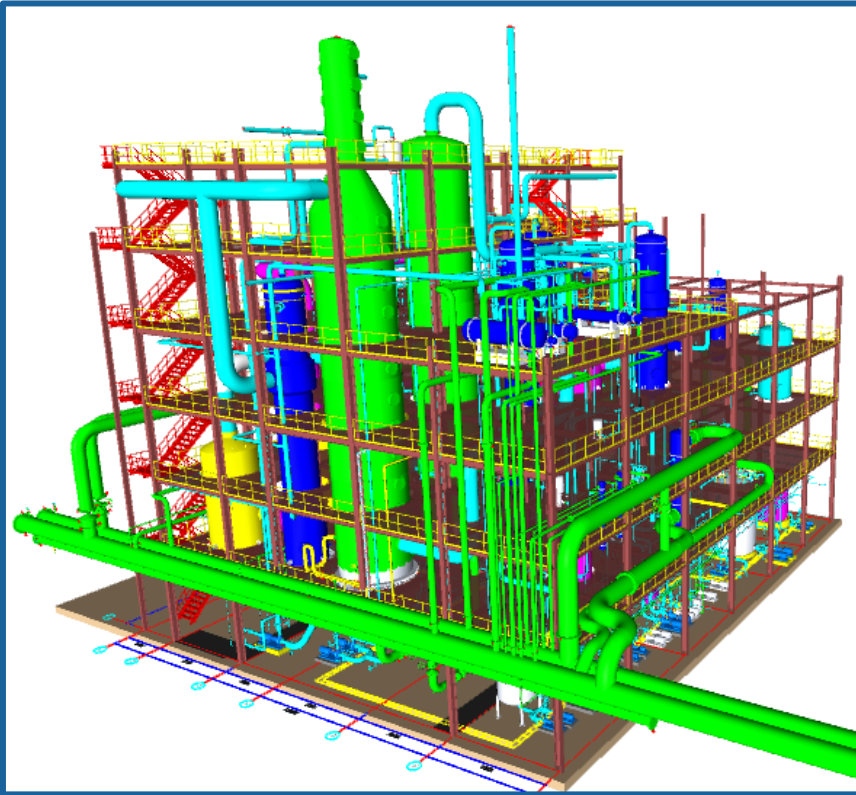
- Design of Crude Oil Storage Tank
- Design of Storage Tank as per API-650
- Design of Storage Tank as per IS803
- Design of Storage Tank as per PESO norm
- Support for PESO approval

- Flat Head
- Internal Floating Roof Tanks
- External Floating Roof Tanks
- Domed External Floating Roof Tanks
- LNG (Liquefied Natural Gas) tanks.



Project Engineering and Execution

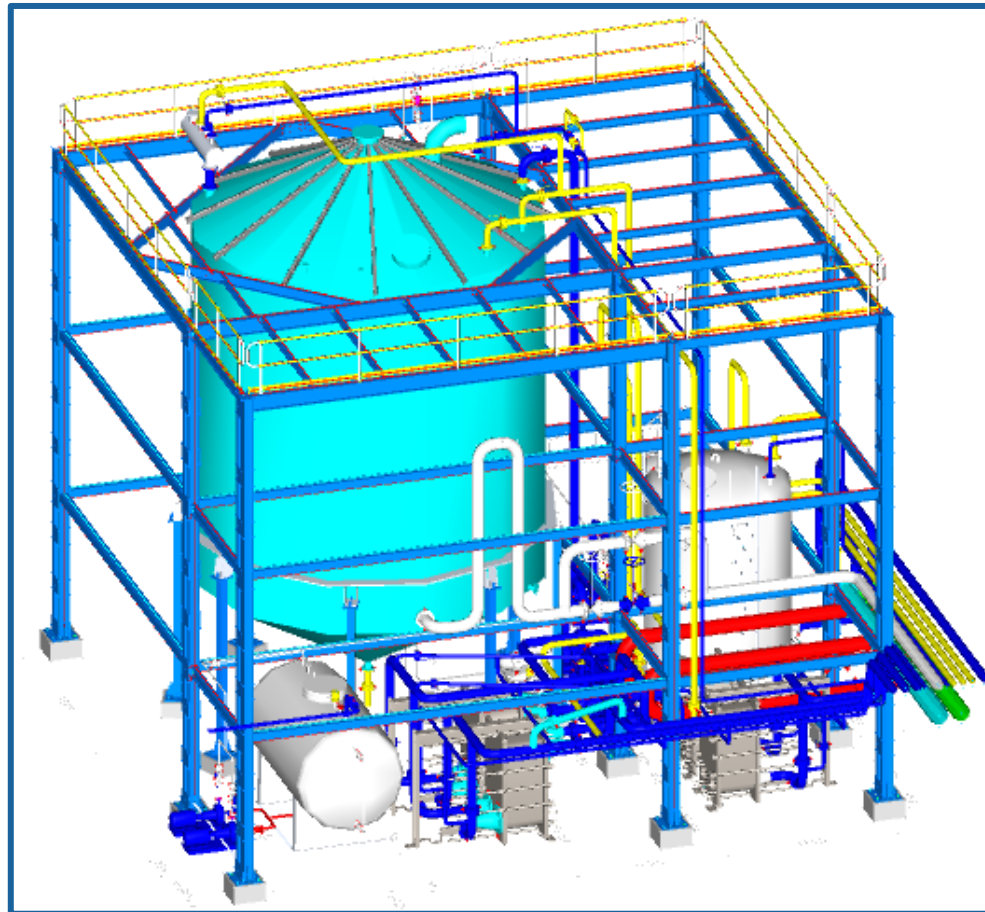
Plant Engineering : Plant Engineering comprising of Process, Mechanical, Piping, 3D modelling, E&I, etc.
(Liquification / Fermentation / Distillation / Evaporation Sections)



- i. 350KLPD Greenfield Plant
- ii. Capacity Enhancement 200KLPD to 300KLPD

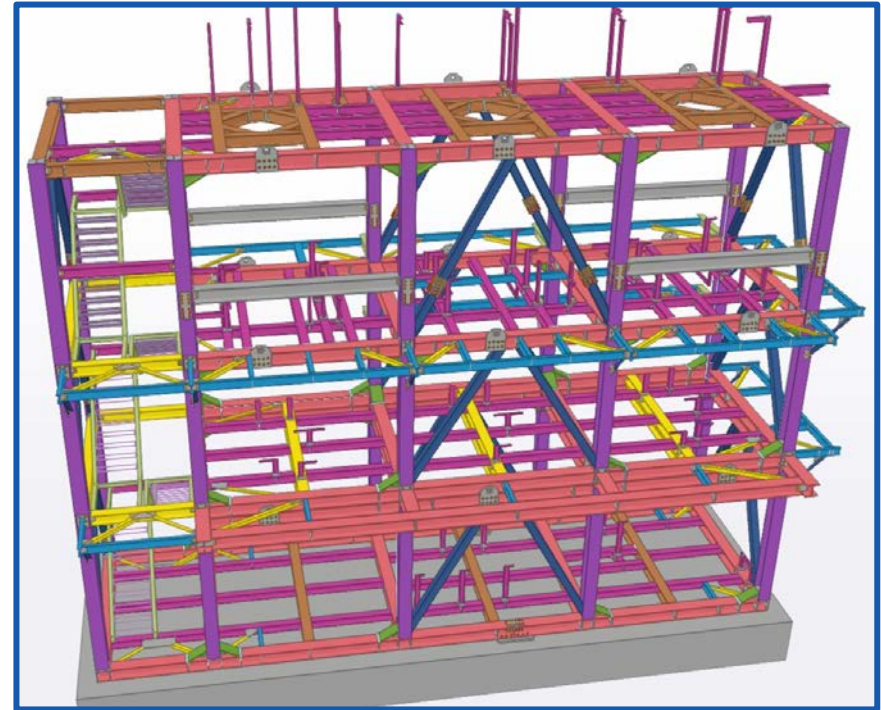
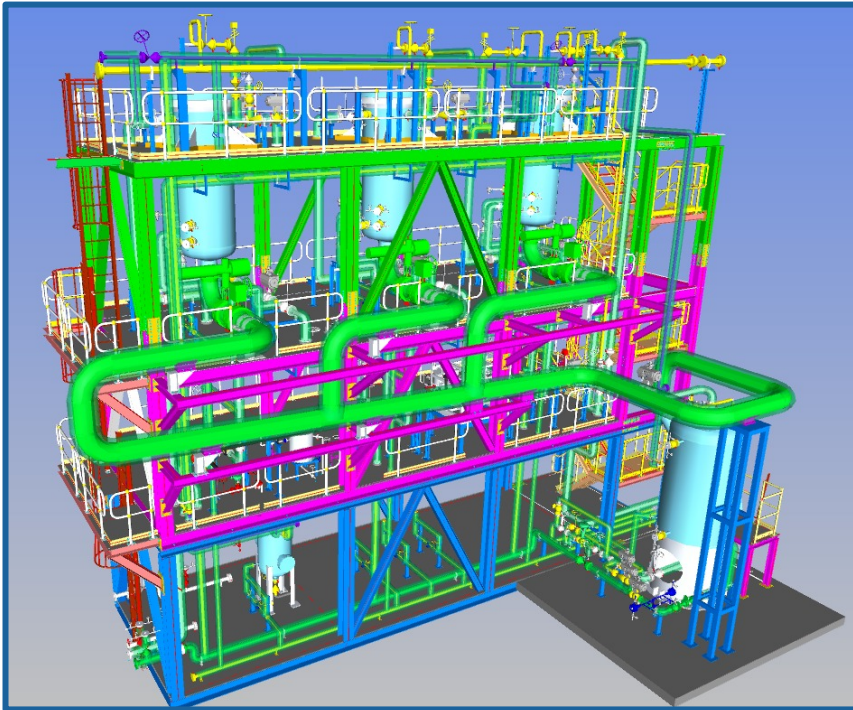
Project Engineering and Execution

Plant Engineering : Plant Engineering comprising of Process Engineering, Mechanical Engineering, Piping, 3D modelling, Electrical & Instrumentation, Isometrics & BOM etc.



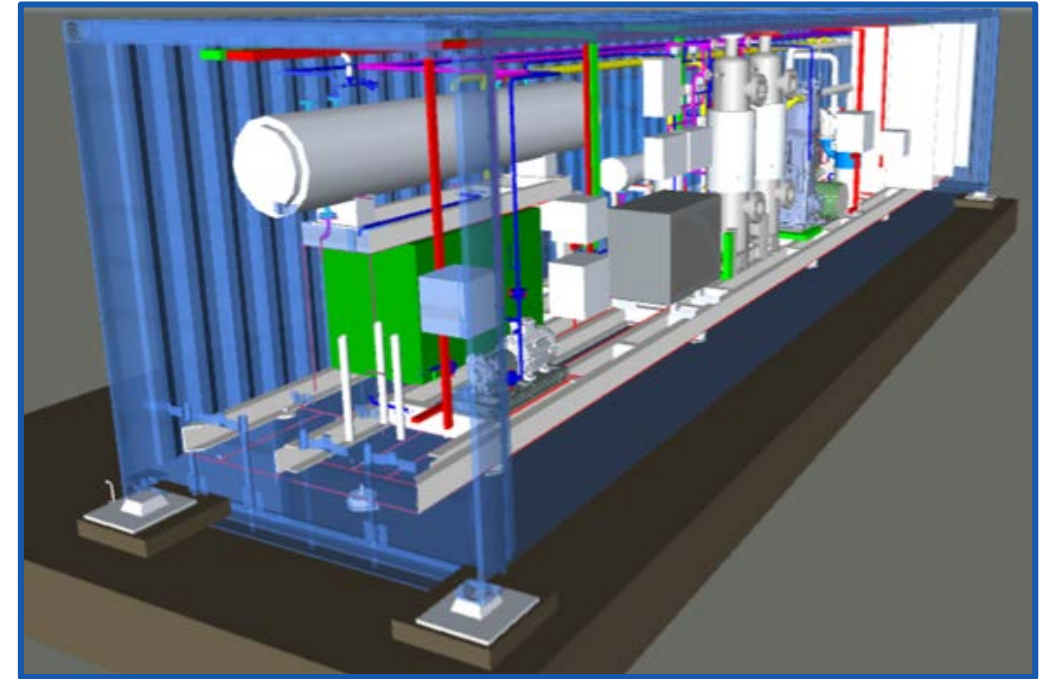
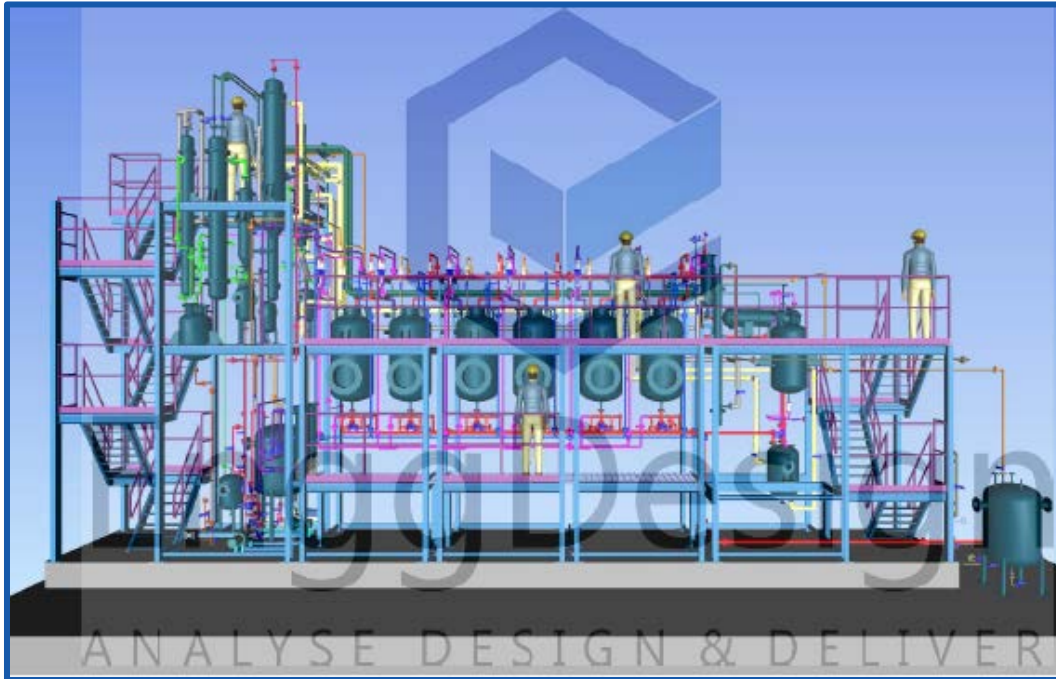
Project Engineering and Execution

Skid Engineering : Plant Engineering comprising of Structural, Equipment, Piping, 3D modelling, Electrical & Instrumentation, Isometrics & BOM etc.



Project Engineering and Execution

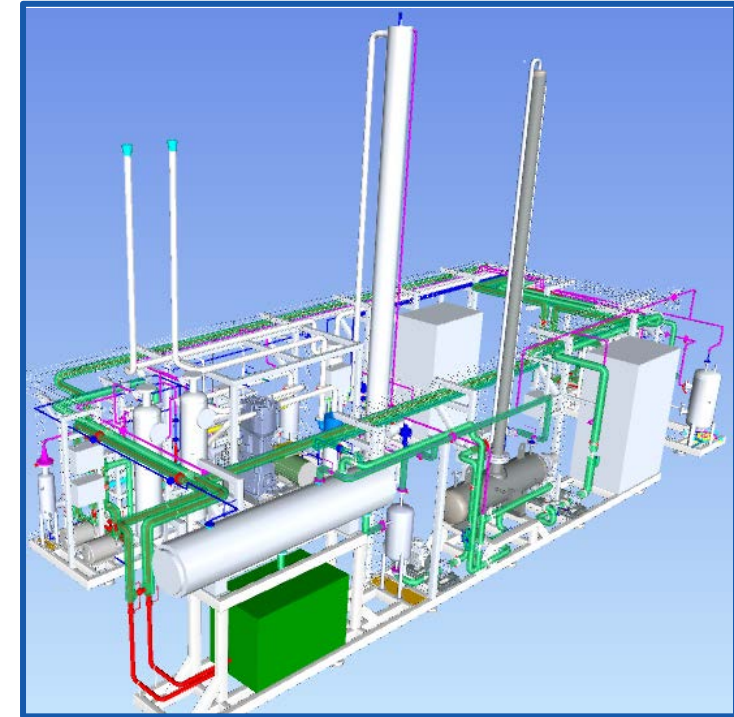
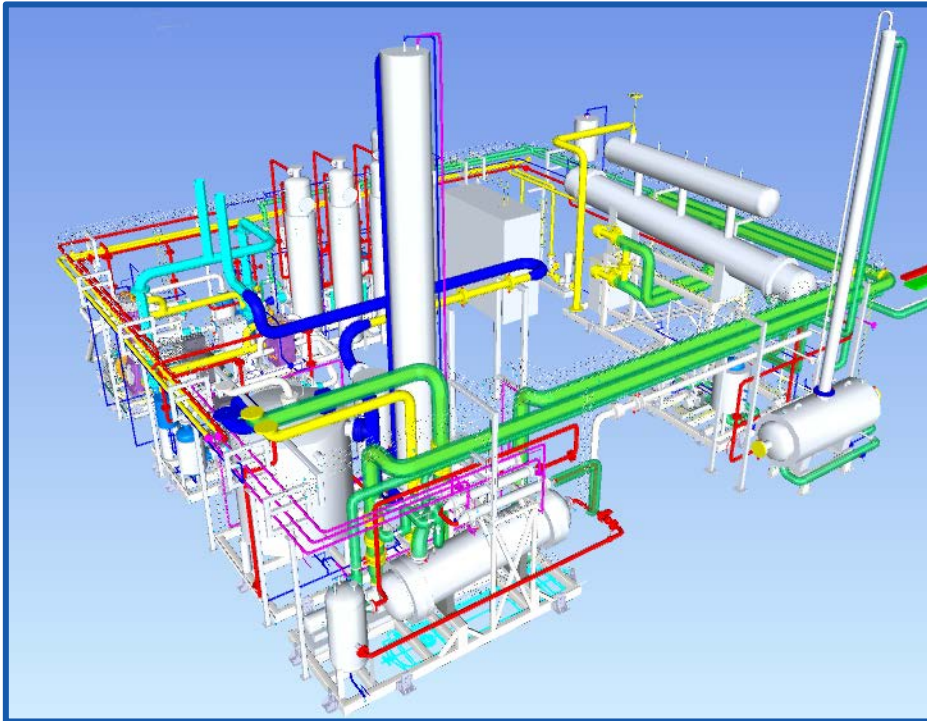
Skid Engineering : Plant Engineering comprising of Structural, Equipment, Piping, 3D modelling, Electrical & Instrumentation, Isometrics & BOM etc.



Containerized Skid Engineering

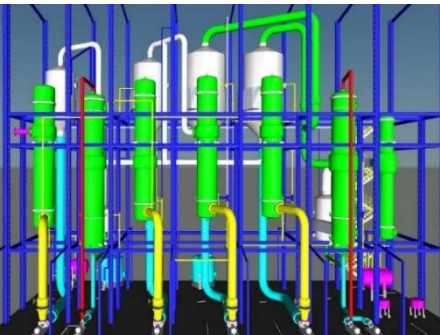
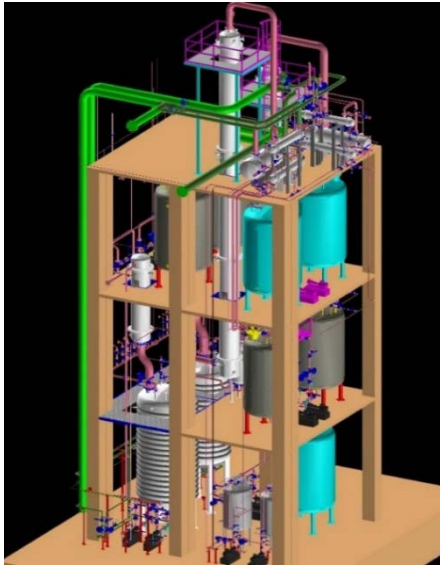
Project Engineering and Execution

Skid Engineering : Plant Engineering comprising of Structural, Equipment, Piping, 3D modelling, Electrical & Instrumentation, Isometrics & BOM etc.

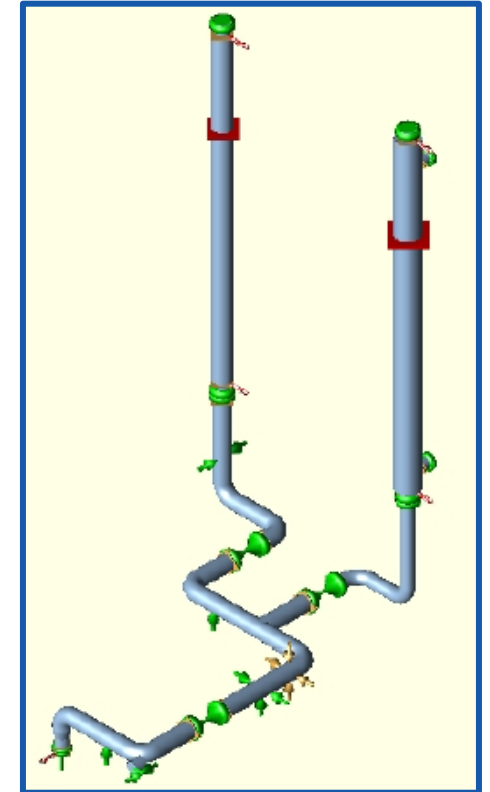
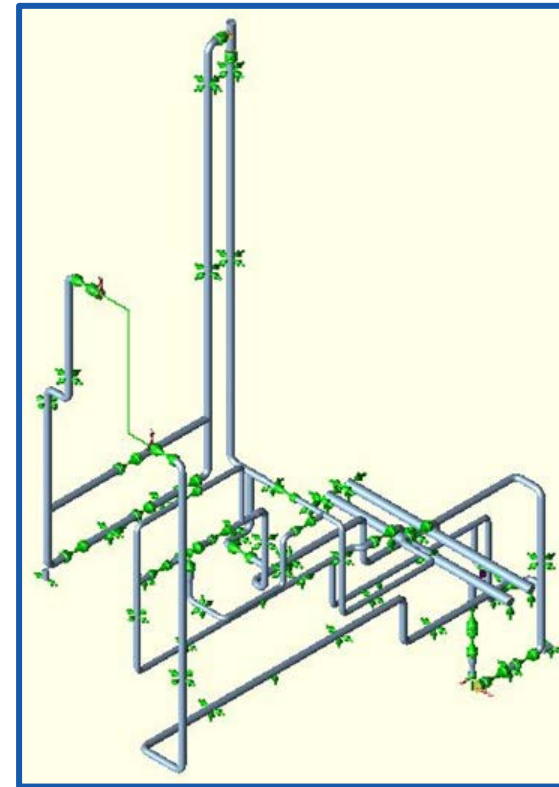
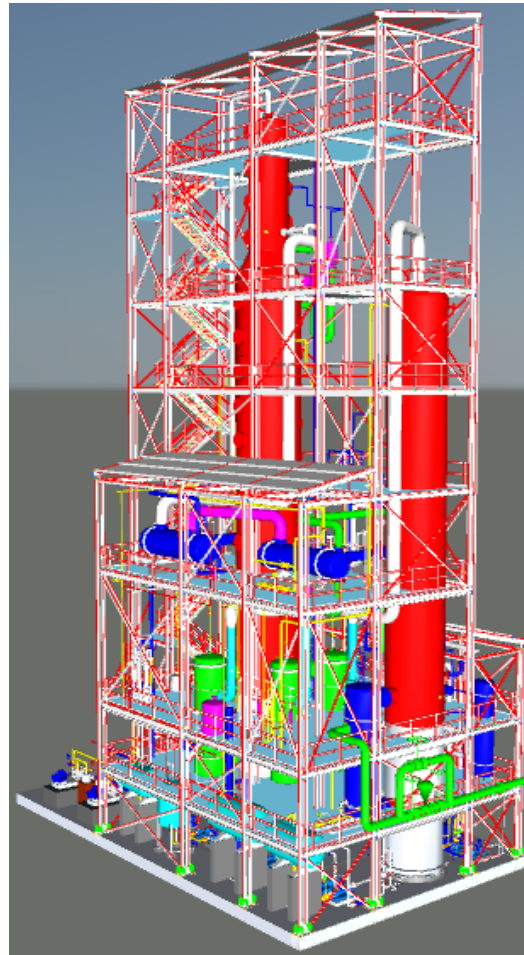


Project Engineering and Execution

Plant Piping Engineering, 3D Modeling & Stress Analysis :

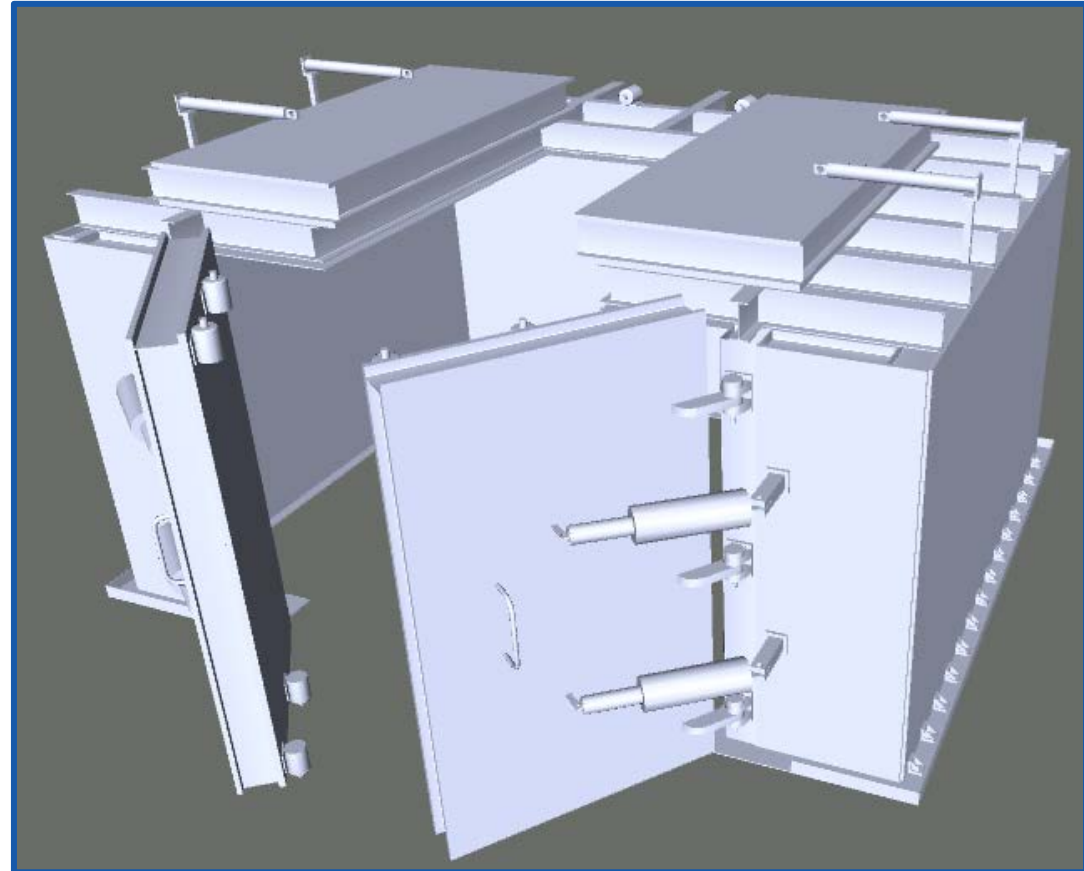
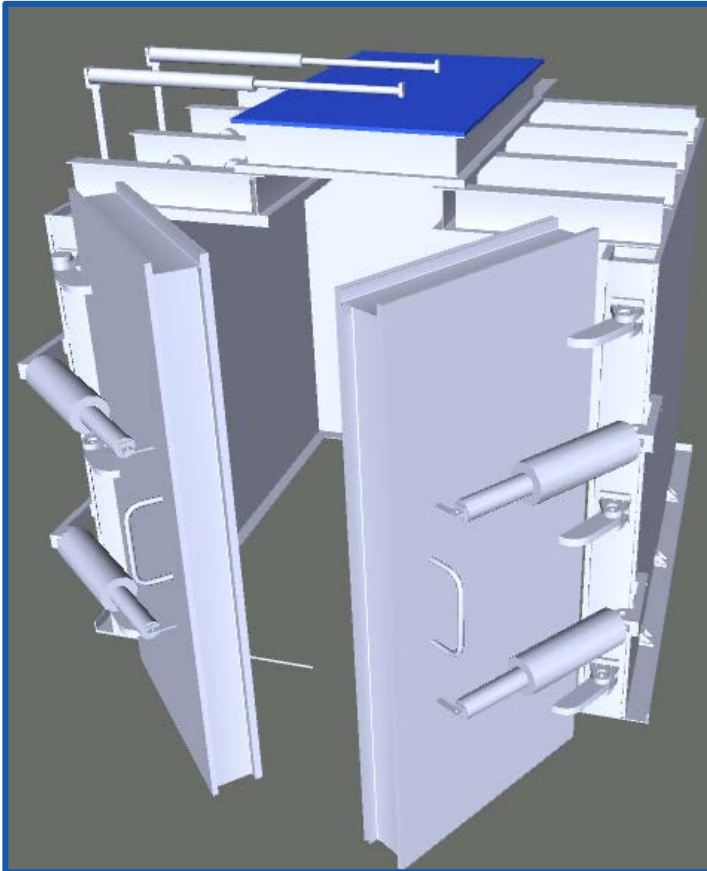


Evaporation / Distillation / SRP Plant

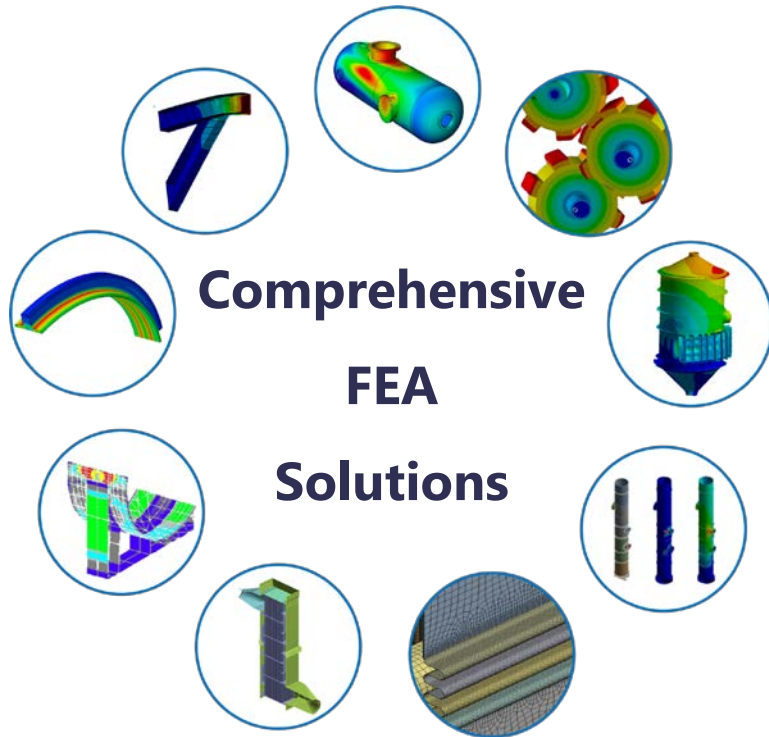


Critical Lines Stress Analysis

High Pressure Valve Testing Chambers: Engineering Design, FE Analysis, Detailed Engineering



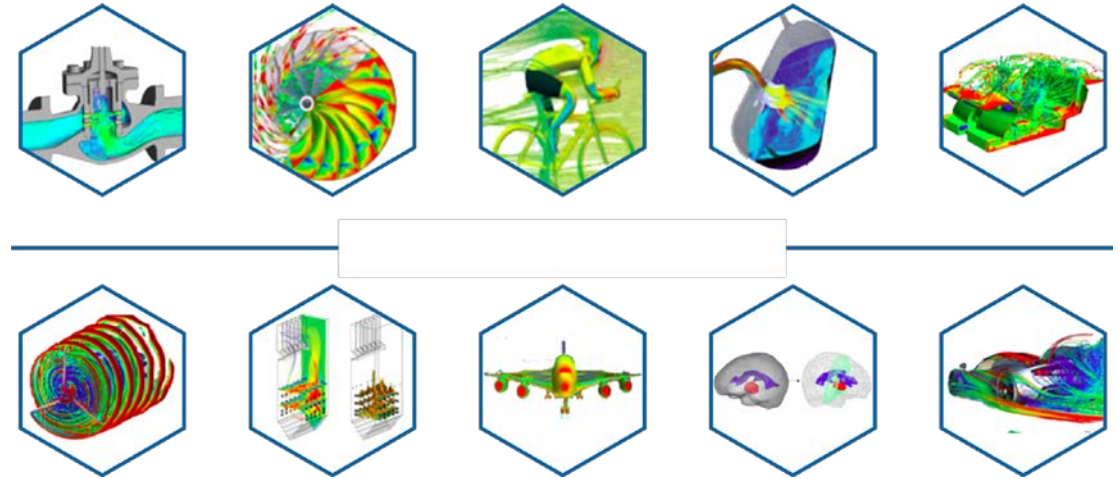
Comprehensive FEA & CFD Solutions



Key Areas

- Static Loading Analysis
- Modal/Frequency Analysis
- Elastomer FEA
- Bolt Preload
- Fatigue Analysis
- Sealing Pressure Analysis

Comprehensive CFD Solutions



Key Areas

- Flow Analysis
- Thermal Analysis
- Single/Multiphase Analysis

Some examples of project executed with site support

- Site Assessment
- Data Collection & Analysis
- Interaction with client field team to understand requirement



Life Assessment-
Equipment Qty. 26Nos



API 650 Tank
(Scope: Engineering)



Pipe Rack
(Scope: Engineering, Supply and Site Execution)

Project Execution & Supply



Hot Well cold well tank



Powder Rejuvenate Plant



Dryer Chamber

**Some examples of
project and
equipment supplied**



Chemical Plant Vessel

Supplied Equipment



Mirror Finish Vessel



Process Reactors

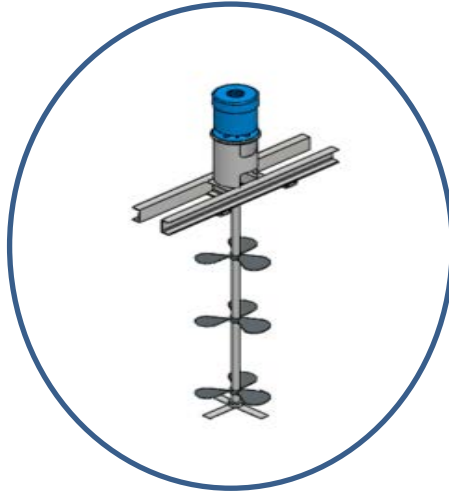


Heat Exchanger

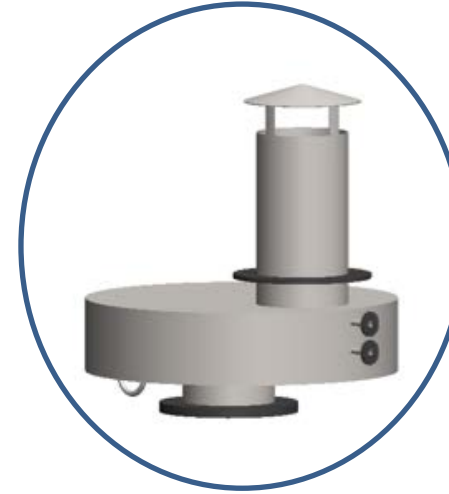
Developed Products



Surge vessel



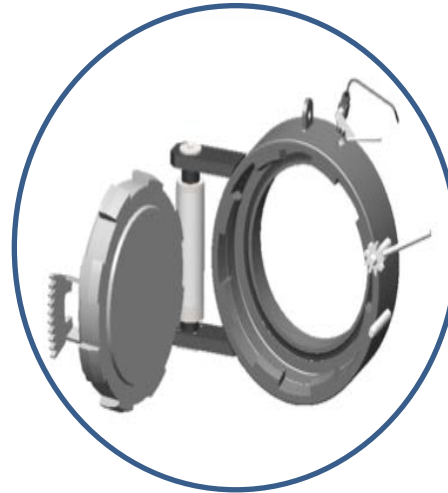
Agitator



Breather Tank



Customised Manholes



Quick opening Closure

Our Work Strength Areas



EnggDesign
ANALYSE DESIGN & DELIVER

Software's Used

PV Elite®
PRESSURE VESSEL ANALYSIS

CAESAR II®
Pipe Stress Analysis

AutoCAD

ZWCAD

ANSYS®



STAAD.Pro



Our Clients

 				 	End-Client  ارامكو السعودية Saudi Aramco
					 Enriching Lives
	 RANA SUGARS LIMITED	 Economy™ <i>Excellence with Economy</i>	 THERMAX		 DEVAM <i>Dedication VALUES Mastery</i>
					
	 Hypro H™ Synonym of TRUST		 Fobtech <i>Projects & Engineers</i>		

TESTIMONIAL



Appreciation for Good Services and Supply
Ever since our company has sign the contract with you,
Your team has been delivering high quality work with
exceptional customer service.

★★★★★

TESTIMONIAL



The team demonstrated commendable performance across key areas, including design, detailed engineering, manufacturing, quality, and adherence to schedules. They responded promptly to project needs, proactively suggesting and implementing necessary modifications. We are highly satisfied with their performance and look forward to considering them for future collaborations.

★★★★★

TESTIMONIAL



Appreciation for Good Services and Supply

Their performance with respect to design, detailed engineering, manufacturing, quality, schedule, etc., was very satisfactory. They were prompt to suggest required system for storage and supply of above activities. We are totally satisfied with their performance and we shall consider placing order with them for future Projects.

★★★★★

Thank you

EMACTO Enterprises Pvt. Ltd.

 F4, Hira Shree Building, Sector 4, Sant Nagar, Pune-Nashik Highway, Moshi, Pune - 412105

 +91 9920978770 | +91 9975591666 | +91 7745858918

 eshwar@enggdesign.in | support@enggdesign.in | admin@enggdesign.in

 www.EnggDesign.in